

State of Wyoming Corner Record

(In compliance with the *CORNER PERPETUATION AND FILING ACT*, Wyoming Statutes, 1997 Section 33-29-140 et. seq., and the Rules and Regulations of the Board of Professional Engineers and Professional Land Surveyors)

Reverse side of this form may be used if more space is needed.

Record of original survey and citation of source of historical information (if corner is lost or obliterated). Description of corner monumentation evidence found and/or monument and accessories established to perpetuate the location of this corner. Sketch of relative location of monument, accessories, and reference points with course and distance to adjacent corner(s) (if determined in this survey). Method and rationale for reestablishment of lost or obliterated corner.

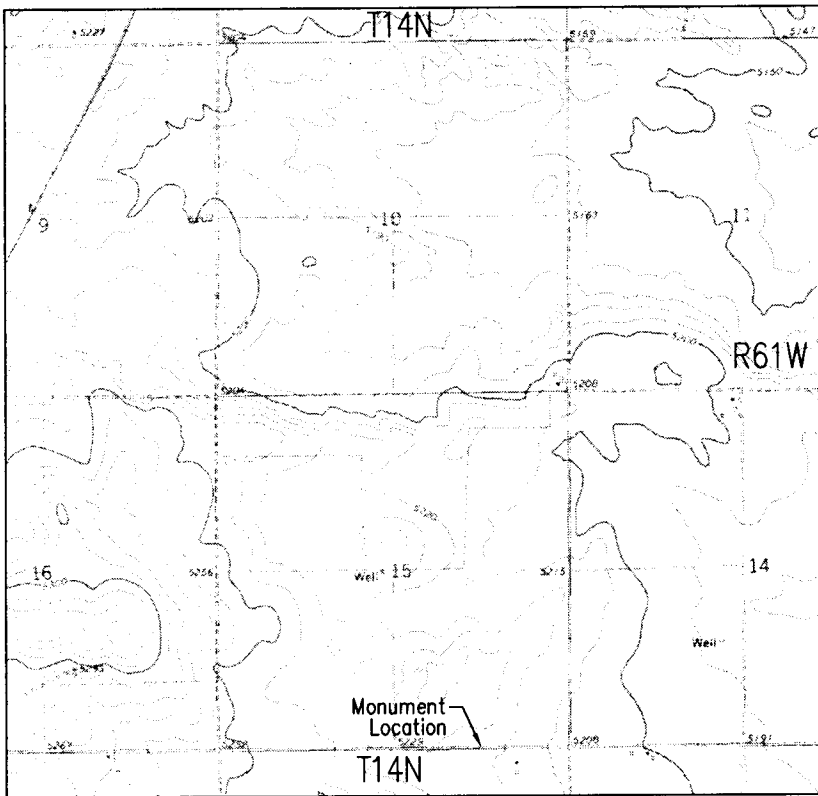
FOUND: NOTHING



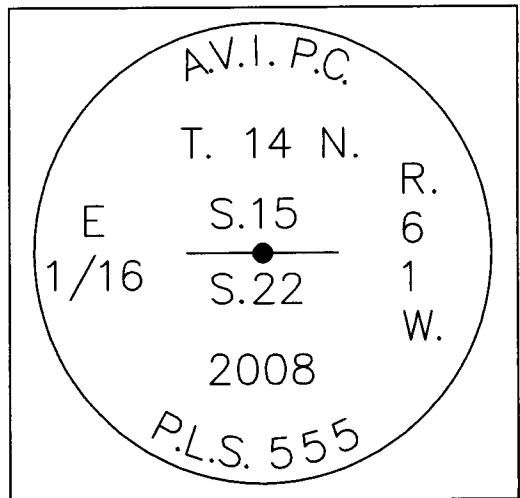
RECORDED 5/22/2008 AT 11:41 AM REC# 500554 BK# 2060 PG# 1280
DEBRA K. LATHROP, CLERK OF LARAMIE COUNTY, WY PAGE 1 OF 1

NOTE:
FOR ADDITIONAL INFORMATION ON THIS CORNER, SEE A MAP OF SURVEY RECORDED AT BOOK 2048, PAGE 940; FILED IN MAP CABINET SURV 4 SLOT 53, OF THE RECORDS OF THE LARAMIE COUNTY CLERK

SET: 3 1/4" ALUMINUM CAP ON
3/4" X 30" REBAR



Monument location



Monument Inscription

Date of Field Work: 3-21-08

Office Reference: 2923

Cross Index Plat

	1	2	3	4	5	6	7	8	9	10	11	12	13	14	15	16	17	18	19	20	21	22	23	24	25	
A		+	+	+	+	+	+	+	+	+	+	+	+	+	+	+	+	+	+	+	+	+	+	+	+	
B		+	+	+	+	+	+	+	+	+	+	+	+	+	+	+	+	+	+	+	+	+	+	+	+	
C		+	6	+	5	+	+	+	4	+	+	+	+	3	+	+	+	+	2	+	+	+	+	1	+	
D		+	+	+	+	+	+	+	+	+	+	+	+	+	+	+	+	+	+	+	+	+	+	+	+	
E		+	+	+	+	+	+	+	+	+	+	+	+	+	+	+	+	+	+	+	+	+	+	+	+	
F		+	+	+	+	+	+	+	+	+	+	+	+	+	+	+	+	+	+	+	+	+	+	+	+	
G		+	7	+	8	+	+	+	9	+	+	+	+	10	+	+	+	+	11	+	+	+	+	12	+	
H		+	+	+	+	+	+	+	+	+	+	+	+	+	+	+	+	+	+	+	+	+	+	+	+	
J		+	+	+	+	+	+	+	+	+	+	+	+	+	+	+	+	+	+	+	+	+	+	+	+	
K		+	+	+	+	+	+	+	+	+	+	+	+	+	+	+	+	+	+	+	+	+	+	+	+	
L		+	18	+	17	+	+	+	16	+	+	+	+	15	+	+	+	+	14	+	+	+	+	13	+	
M		+	+	+	+	+	+	+	+	+	+	+	+	+	+	+	+	+	+	+	+	+	+	+	+	
N		+	+	+	+	+	+	+	+	+	+	+	+	+	+	+	+	+	+	+	+	+	+	+	+	
O		+	+	+	+	+	+	+	+	+	+	+	+	+	+	+	+	+	+	+	+	+	+	+	+	
P		+	19	+	20	+	+	+	21	+	+	+	+	22	+	+	+	+	23	+	+	+	+	24	+	
Q		+	+	+	+	+	+	+	+	+	+	+	+	+	+	+	+	+	+	+	+	+	+	+	+	
R		+	+	+	+	+	+	+	+	+	+	+	+	+	+	+	+	+	+	+	+	+	+	+	+	
S		+	+	+	+	+	+	+	+	+	+	+	+	+	+	+	+	+	+	+	+	+	+	+	+	
T		+	30	+	29	+	+	+	28	+	+	+	+	27	+	+	+	+	26	+	+	+	+	25	+	
U		+	+	+	+	+	+	+	+	+	+	+	+	+	+	+	+	+	+	+	+	+	+	+	+	
V		+	+	+	+	+	+	+	+	+	+	+	+	+	+	+	+	+	+	+	+	+	+	+	+	
W		+	+	+	+	+	+	+	+	+	+	+	+	+	+	+	+	+	+	+	+	+	+	+	+	
X		+	31	+	32	+	+	+	33	+	+	+	+	34	+	+	+	+	35	+	+	+	+	36	+	
Y		+	+	+	+	+	+	+	+	+	+	+	+	+	+	+	+	+	+	+	+	+	+	+	+	
Z		+	+	+	+	+	+	+	+	+	+	+	+	+	+	+	+	+	+	+	+	+	+	+	+	
	1	2	3	4	5	6	7	8	9	10	11	12	13	14	15	16	17	18	19	20	21	22	23	24	25	

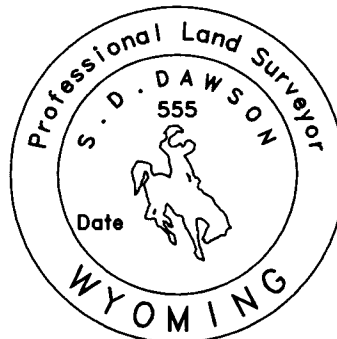
Firm/Agency, Address

AVI P.C.
2035 WESTLAND ROAD
CHEYENNE, WY. 82001

This corner record was prepared by me or under my direction and supervision.

SEAL & SIGNATURE

Telephone Number: 307-637-6017



Corner Name EAST 1/16

Section 15 ²² T 14 N, R 61 W, 6th P.M.

Cross-Index No.: N-16

County: Laramie Wyoming